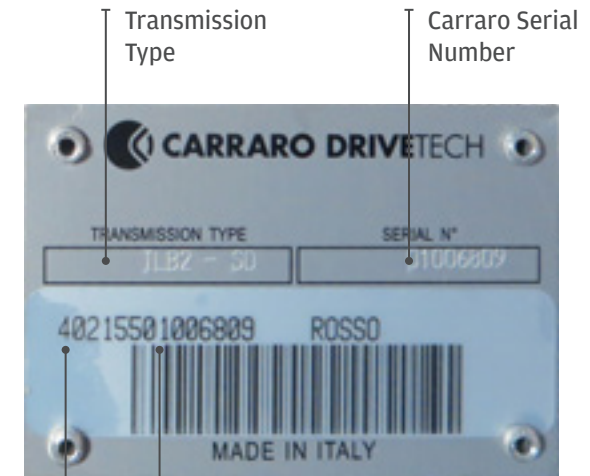
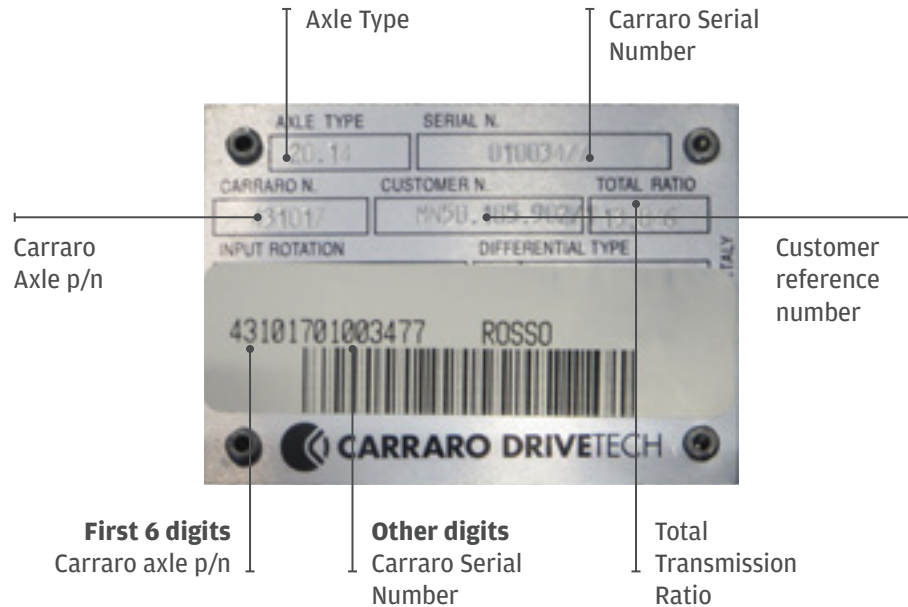


How to recognize a Carraro product

1. The **metallic plate** fixed on the axle or transmission is the first way to recognize a Carraro product. It includes all necessary information to recognize the product and to make sure you are ordering the correct spare parts:

- > Carraro brand
- > Axle/transmission model (type)
- > Carraro axle/transmission part number



2. If there is no identification plate, you can read the **five/six-digits number** molded in cast iron (wheel hub, beam central body, differential support, swivel housing, etc).

This code allows the identification of the axle or transmission, making possible to identify the correct number of the component.

3. Also the planetary carrier cover can help to recognize a Carraro axle.



5 digits number ___ wheel hub



5 digits number ___ beam central body



6 digits number ___ half housing transmission



6 digits number ___ axle beam

